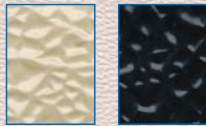


# NUDO Fiber-Lite® FRP Liner Panels

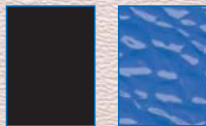
.090  
Liner Panel  
Colors Available



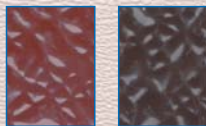
Almond Smooth Almond



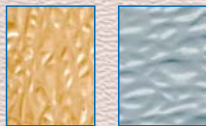
Beige 293 Black



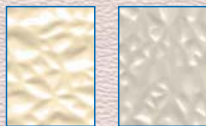
Smooth Black Blue



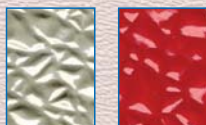
Bordeaux Brown



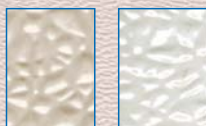
Coral Gray



Ivory 611 Khaki



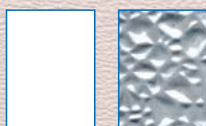
Pearl 750 Red 132



Silver White 148



White 50 Pineapple



Smooth White Medium Grey 1207



Fiber-Lite Panels are fiberglass reinforced plastic (FRP) liner panels (no substrate backer) ideal for new or retrofit construction. They install directly to solid wall surfaces or can be used for drop-in ceiling tiles. Fiber-Lite Liner Panels combine custom blended polyester resins with specially engineered glass fibers to produce durable, easily maintainable, sanitary wall and ceiling panels with exceptional physical and mechanical properties. By providing a wide range of options, Fiber-Lite Liner Panels meet the specifications required for a professional and attractive wall and ceiling system.

## Wall Liner Panels

- ◆ Strong, shatter resistant, textured or smooth surface resists scratches.
- ◆ Thermal shock and chemically resistant.
- ◆ Cleans with steam, detergent and water or high pressure sprayers.
- ◆ 100% moisture resistant.
- ◆ Available in colors.
- ◆ USDA and Agriculture Canada certified.
- ◆ Installs directly to a solid wall of plasterboard, masonry, wood or metal.
- ◆ Class C Fire-rated surface. Class A available.
- ◆ Installs as drop-in ceiling panels.
- ◆ All components available for easy installation.
- ◆ Pre-laminated available

* Product No.	Thickness & Description	Sizes
LP-F9	.090" Textured	4'x8', 9', 10', 12'
LP-F9-R	.090" Textured-Roll	4'x50', 250', 500'
LP-F9-WR	.090" Textured-Wide Roll	8'X50', 250'
LP-F9-FR	.090" Textured fire-rated	4'x8', 10'
LP-S9-FR	.090" Smooth fire-rated	4'x8', 10'
LPXSG9-R	.090" High-gloss smooth	4'x50', 500'
LP-F5	.050" Textured-.050	4'x8', 10', 500'
LP-F9-CT	.090" Textured-Ceiling Tile	2'x2', 4'
LP-F120	.120" Textured	4'x8', 10'
LP-F120-CT	.120" Textured-Ceiling Tile	2'x2', 4'

## Physical and Engineering Properties of Fiberglass .090

	ASTM No.	LP-F9 .090" CLASS C Value/Units	LP-F9-FR .090" CLASS A Value/Units
Brock Hardness	2583, 934-1	40 Avg.	35 Avg.
Flexural Strength	D790	17,000 psi	10,000 psi
Flexural Modules	D790	6.0 x 10 <sup>5</sup> psi	3.1 x 10 <sup>5</sup> psi
Compressive Strength	D695	16,000 psi	7,000 psi
Compressive Modules	D695	8.8 x 10 <sup>5</sup> psi	3.6 x 10 <sup>5</sup> psi
Tensile Strength	D638	8,000 psi	7,000 psi
Elongation	D 638	1.20%	1.80%
Water Absorption	D570	.17% at 72 Hrs.	.72% at 72 Hrs.
IZOD Impact	D256	7.0 ft. lbs./in.	7.16 ft. lbs./in.
Flame Spread Index	E84-81A	175	25
Smoke Developed Value	E84-81A	270	335
Fire-Rating Class		C	A

## SPECIFICATIONS Fiber-Lite Liner Panels

CLASS C	.090" thickness	Sheets			
TEXTURED	Product No. LP-F9 .090"	4'x8'	4'x9'	4'x10'	4'x12'
White*	■	■	■	■	■
Almond	■	■	■	■	■
Beige	■	■	■	■	■
Gray	■	■	■	■	■
Pearl	■	■	■	■	■
Silver	■	■	■	■	■
Ivory	■	■	■	■	■
Coral	■	■	■	■	■
Red	■	■	■	■	■
Black	■	■	■	■	■
Yellow	■	■	■	■	■
Brown	■	■	■	■	■
Blue	■	■	■	■	■
SMOOTH					
White	■	■	■	■	■
GEL COAT					
SMOOTH	Product No. LP-XSG9.090"	■	■	■	■
White	■	■	■	■	■
Almond	■	■	■	■	■
Beige	■	■	■	■	■
Pearl	■	■	■	■	■
Silver	■	■	■	■	■
Ivory	■	■	■	■	■
SMOOTH	Product No. LP-F9-FR .090" Fire-rated				
White	■	■	■	■	■